

SD-STARS

Introduction to SD-STARS for new users

August 28, 2019 – 2:30 p.m. CT

Brad Steckelberg, SD-STARS Support Lead

Objectives

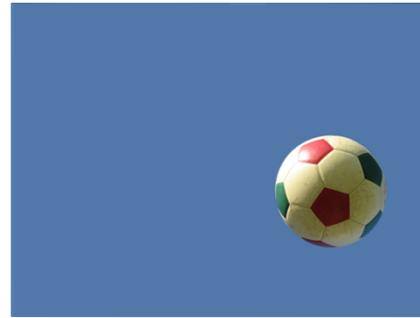
- What is SD-STARS?
- How do I log in to SD-STARS?
- How do I find & request reports?
- What other resources are available in SD-STARS?
- How do I find help if I have questions?

For this session, we will discuss the following Objectives

- What is SD-STARS?
- How do I log in to SD-STARS?
- How do I find & request reports?
- What other resources are available in SD-STARS?
- How do I find help if I have questions?

What is SD-STARS?

- State Longitudinal Data System (SLDS)
 - Collects and maintains student- and staff-level data
 - Links data across entities and over time
 - Makes data accessible through reporting and analysis tools

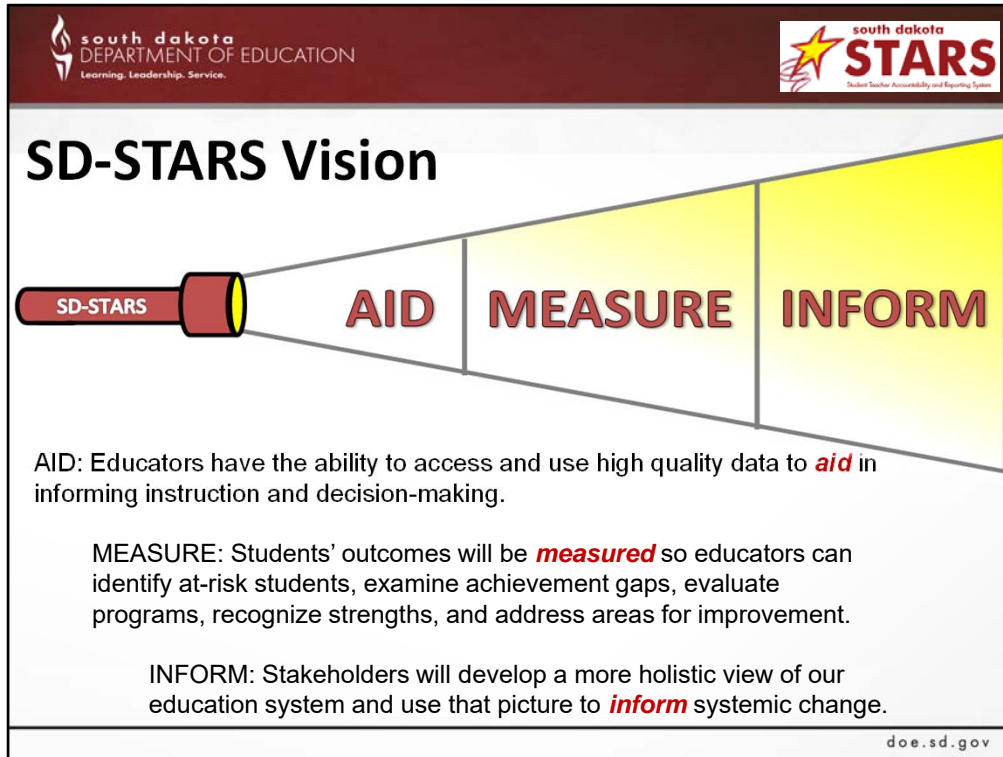


doe.sd.gov

SD-STARS is South Dakota's version of a Statewide Longitudinal Data System. What is a SLDS? A SLDS pulls already available data from different sources (ex: Infinite Campus, assessments), dumps data into a centralized system, and securely links data together. The power of the system comes from its ability to link student or staff-level data at multiple levels (classroom, school, district) and over multiple years. SLDS also makes this data available to stakeholders.

Animation: Ask them to describe the picture once it appears. They should describe the green and red soccer ball and should at some point say that it is in mid-air against a blue sky. Tell them that we can see that the ball is in mid-air but we can't determine the direction of the ball. We don't know if it is going up, down, left, right, spinning, fast slow, etc. It probably isn't floating in mid-air and not responding to gravity, if it were, we would certainly want to know that too. But if we show several pictures over time, we can see these characteristics about the motion and direction of the soccer ball. Click so the ball moves. SD-STARS is able to show data not only across systems but over time so we can see the movement, direction, and speed of our students.

Think about photography – current systems provide just a snapshot of the student, but SD-STARS will put those snapshots into a video as he/she advances from grade to grade. If you combine students' videos together into a montage, then you could spot trends in students with different types of experiences.



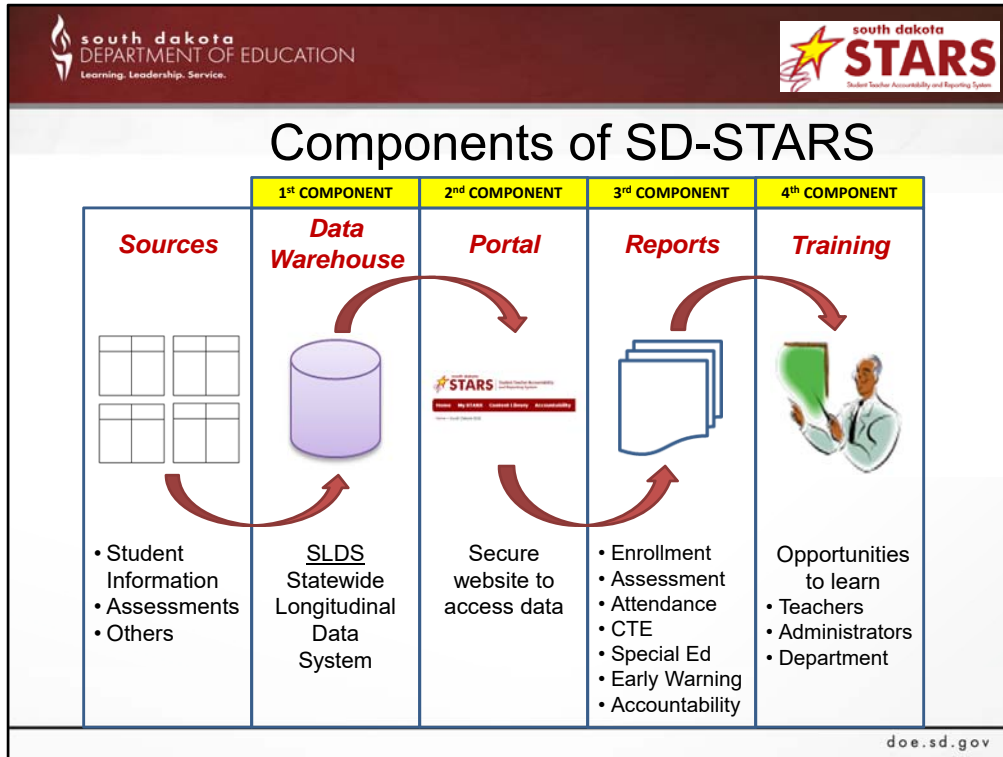
Schools are often data-rich but information-poor, meaning they collect data but no one is using data other than for required reporting. SD-STARS is like a flashlight, making data available to shine a light on different aspects of education. SD-STARS provides data to identify what we are doing well and what we can do better as well as help stakeholders, including students, teachers, principals, superintendents, school board members, and policy makers, make data-informed decisions. In short, schools will be data-rich AND information-rich.

SD-STARS has three purposes as part of its Vision.

The first purpose is to *aid* teachers and administrators. Educators have the ability to access and use high quality data to *aid* in informing instruction and decision-making. Part of this is for the data to be displayed in an easily understood format and educators to be trained so they are able to identify trends and conduct thorough analyses.

The second purpose is to *measure* student outcomes so that we can examine what it means to educate South Dakota's students and what we can do to improve.

The final piece is to *inform* by pulling everything together so that a holistic picture of South Dakota's education system is developed.



Sources – Raw Ingredients

Data Warehouse – Mixing Ingredients

Portal – Transform into Cake-like substance

Reports – Finished Cake, accessible to all with forks

Training – Professional decorator, signage about allergies, etc.

Sources:

In order to make a cake, every cook must start out with ingredients. Normally we wouldn't enjoy most of these ingredients separately, such as raw eggs, flour (especially gluten-free flour substitutes), baking powder, etc. but they are essential in the cake-making process.

Similarly, Sources look different and may not look very useful on their own. Information is collected about student demographics, assessments, career and college readiness, and other information. Used in the right way this data is useful, but as separate sources, it doesn't provide much help to anyone.

Data Warehouse (First Component):

In the cake-making process, the ingredients must be mixed together. Sometimes the cake batter is tasty, but it still doesn't resemble the end product.

The Data Warehouse is the first component of SD-STARS, otherwise known as a Statewide Longitudinal Data System (SLDS). It takes all of the data from the Sources and makes them make more sense. It starts to look more organized, but it's still not ready for users to see.

Portal (Second Component):

As a cake sits in a hot oven, it transforms into a more spongy substance. The cake's consistency starts to hold together. The baker has access to poke the cake and test for doneness, or may authorize other people to check for the same.

The Portal is the secure link which enables users to ultimately access the data they need. In SD-STARS, the first step for users is to get a login and password to the Portal. Once access is granted, users will be able to see News, Upcoming events, the SD-STARS Content Library, and other content which is geared for each person's role. Every user has the opportunity to make a customized page through the MySTARS menu item, where they can flag events and see recommended content, based on the user's role.

Reports (Third Component):

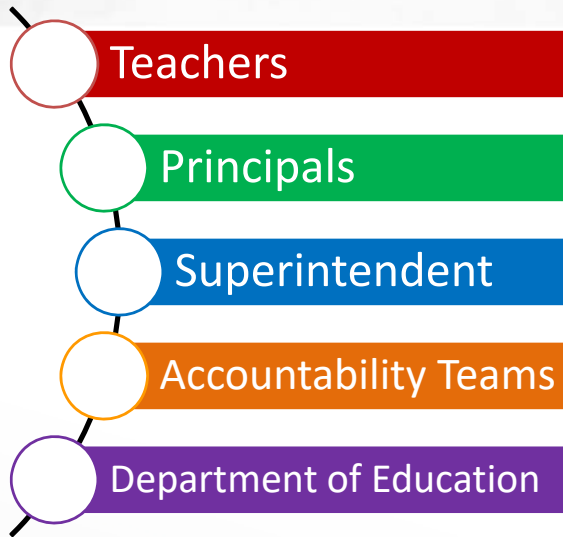
Once the cake is removed from the oven, it looks much like the final product. Everyone with a fork or knife has access to it. Some only need a small slice, while others require large pieces.

Similarly, educators use reports to identify trends and conduct thorough analyses, depending on their role. Some only need to access the Accountability Report Card and one or two other reports throughout the year. Others require a much closer look, in order to make informed data-driven decisions for individual students, the classroom, school, or district. The report categories include: Enrollment, Assessment, Attendance, CTE, Special Ed, Early Warning, Accountability, and Other Reports.

Training (Fourth Component):

A plain piece of cake won't sell in a restaurant's dessert showcase. But when a professional decorates the cake with icing, flowers, candy, or fruit, customers begin to see the value of buying the same cake. If a gluten-free cake was made (some would call this a cake without fun), it's up to professionals to educate customers on the ingredients and processes that were used in making the dessert.

Similarly, the reports are only useful if the end-users such as teachers and administrators know how to access and interpret the reports. SD-STARS has a Training Center menu item with many opportunities to learn. The Training Center includes useful guides and videos to help users understand the Accountability Report Card and reports relating to Enrollment, Assessments, Attendance, CTE, Special Ed, Early Warnings, Student Outcomes, Accountability, and more. The Training Center also provides information for each district's STARS Account Manager and STARS trainers. Information for districts, and STARS publications are listed, as well as the process for requesting a new report to be made in the system.



need to know

- **Districts determine who gets and what level of access they receive.** Some districts choose not to give teachers access. Contact your SAM for info.
- **Permissions in SD-STARS determine what data you see.** Teachers will usually see student-level data for their classroom and school level data in aggregate.

Objectives

- What is SD-STARS?
- How do I log in to SD-STARS?
- How do I find & request reports?
- What other resources are available in SD-STARS?
- How do I find help if I have questions?

For this session, we will discuss the following Objectives

- What is SD-STARS?
- How do I log in to SD-STARS?
- How do I find & request reports?
- What other resources are available in SD-STARS?
- How do I find help if I have questions?

Logging Into SD-STARS

- Website: <https://doestars.sd.gov>
- User Name: Email Address
- Password Assistance: Help@k12.sd.us

Users with @K12 email addresses use the same password for emails and SD-STARS!



doe.sd.gov

For users with an @k12.sd.us email address, SD-STARS passwords are the same password used to log in to email and other K12 Data Center resources.

If users forget passwords, they will need to contact their district's technology coordinator or the K12 Data Center (Help@k12.sd.us). The SD-STARS team and their district's STARS Account Managers may not be able to assist with forgotten passwords.

For those users without an @ k12.sd.us email address, the password was given to each user by their district's STARS Account Manager.

Demonstration:
How to find
Tech Coordinator and
STARS Account Manager (SAM)
<https://doe.sd.gov/ofm/edudir.aspx>

Objectives

- What is SD-STARS?
- How do I log in to SD-STARS?
- How do I find & request reports?
- What other resources are available in SD-STARS?
- How do I find help if I have questions?

For this session, we will discuss the following Objectives

- What is SD-STARS?
- How do I log in to SD-STARS?
- How do I find & request reports?
- What other resources are available in SD-STARS?
- How do I find help if I have questions?

Enrollment

How many English learners are in my school? What percentage of students are mobile? Which students may be considered homeless?

Assessment

What claims do students consistently do well on or struggle with? How does my DIBELS/AIMSweb scores compare to Smarter Balanced? Are EL students passing the ACCESS test?

Attendance

What students are chronically absent? Are there certain grades that have high number of chronically absent?

Special Ed

What are the most prevalent primary disability? What primary disability has grown over the years?

Other

Are more students participating in the dual credit program? What are the most popular dual credit classes? Are different students disproportionately participating in CTE programs? Are students score better or worse on the ACT? What students received a proactive admissions letter?

SD-STARS is more than the report card. These questions can be answered using STARS Reports.

south dakota
DEPARTMENT OF EDUCATION
Learning. Leadership. Service.

south dakota
STARs
Student Teacher Accountability and Reporting System

Data Sources and Reports

A list of all current data sources within SD-STARs as well as reports available is available on the DOE website.

<https://doe.sd.gov/sdstars>

Statewide
Longitudinal Data System

The Student Teacher Accountability Reporting System (SD-STARs) is a State Longitudinal Data System (SLDS) that will drive the educational initiatives to improve instruction and student performance. The goal is for SD-STARs to securely consolidate and link all educational data that currently resides within the SD DOE. In other words, it pulls data that is already available from different sources (ex. Infinite Campus, assessments), dumps data into a centralized system, and links data together. This will increase data availability for reporting and analysis used by teachers, schools, districts, and the SD DOE as well as external stakeholders, such as policy makers and researchers. SD-STARs will also allow for deeper and richer performance analysis by bringing student, teacher, principal, and financial data together.

Data Sources and Reports

Login Here!

LOG-IN
south dakota
STARs

Data Sources and Reports

SD STARs Brochure

doe.sd.gov

A list of all current data sources within SD-STARs as well as reports available is available on the DOE website.

Option 1: Go to <http://doe.sd.gov/sdstars/documents/DataSourc.pdf>

Option 2: Search for SD-STARs on the DOE site

Once the page comes up, select the Data Sources and Reports link in the sidebar.

Demonstration: SD-STARS Webpage

<https://doe.sd.gov/sdstars>

STARS Student Teacher Accountability and Reporting System

Home My STARS Content Library Accountability Reports **Training Center** Admin

Home » Training Center

training center

Edit this page

The Training Center includes many useful resources!

Scroll down to find Data Interpretation Guides (DIGs)

STARS REPORTS RESOURCES

Learn more about the STARS Reports. This section contains available Data Interpretation Guides (DIGs.)

Enrollment Data Interpretation Guides (DIGs)

- EN.001.00-X – Enrollment Demographics Report DIG
- EN.002.00-A – Student Enrollment List Report DIG
- EN.003.01-A – Student Profile Report DIG
- EN.004.00-X – Withdrawal Reason Analysis Report DIG
- EN.005.00-A – Student Withdrawal List Report DIG
- EN.006.00-A – Mobility Report DIG
- EN.007.00-A – Fall Enrollment Student List Report DIG
- EN.007.00-X – Fall Enrollment Aggregate Report DIG
- EN.008.02-A – McKinney-Vento Student Count Report DIG
- EN.009.00-X – Special Education Trend Report DIG


Assessment Data Interpretation Guides (DIGs)

Every report has a Data Interpretation Guide, or DIG for short. These report DIGs start with a one-page summary of the report, followed by several pages of detailed information, resources and instructions. Report DIGs are the best resource to use if something in your report seems incorrect. Most of the time, there is either an explanation or adjustment that can be made to show the expected students/data.


- Most reports have a Data Interpretation Guide (DIG)
- Found in SD-STARS, link at footer of report



- 1st Page – stand alone document
- Subsequent pages
 - Instructions – prompts, analysis, features
 - Essential Questions – what questions can be answered
 - Frequently Asked Questions
 - Report Details
 - Security



AS.007.01-A
Assessment Feedback Report
Data Interpretation Guide (DIG)



Year	Claim	Indicator	Performance Level	Percentage
2016	1	1	4	100%
2016	1	2	4	100%
2016	1	3	4	100%
2016	1	4	4	100%
2016	1	5	4	100%
2016	1	6	4	100%
2016	1	7	4	100%
2016	1	8	4	100%
2016	1	9	4	100%
2016	1	10	4	100%
2016	1	11	4	100%
2016	1	12	4	100%
2016	1	13	4	100%
2016	1	14	4	100%
2016	1	15	4	100%
2016	1	16	4	100%
2016	1	17	4	100%
2016	1	18	4	100%
2016	1	19	4	100%
2016	1	20	4	100%
2016	1	21	4	100%
2016	1	22	4	100%
2016	1	23	4	100%
2016	1	24	4	100%
2016	1	25	4	100%
2016	1	26	4	100%
2016	1	27	4	100%
2016	1	28	4	100%
2016	1	29	4	100%
2016	1	30	4	100%
2016	1	31	4	100%
2016	1	32	4	100%
2016	1	33	4	100%
2016	1	34	4	100%
2016	1	35	4	100%
2016	1	36	4	100%
2016	1	37	4	100%
2016	1	38	4	100%
2016	1	39	4	100%
2016	1	40	4	100%
2016	1	41	4	100%
2016	1	42	4	100%
2016	1	43	4	100%
2016	1	44	4	100%
2016	1	45	4	100%
2016	1	46	4	100%
2016	1	47	4	100%
2016	1	48	4	100%
2016	1	49	4	100%
2016	1	50	4	100%
2016	1	51	4	100%
2016	1	52	4	100%
2016	1	53	4	100%
2016	1	54	4	100%
2016	1	55	4	100%
2016	1	56	4	100%
2016	1	57	4	100%
2016	1	58	4	100%
2016	1	59	4	100%
2016	1	60	4	100%
2016	1	61	4	100%
2016	1	62	4	100%
2016	1	63	4	100%
2016	1	64	4	100%
2016	1	65	4	100%
2016	1	66	4	100%
2016	1	67	4	100%
2016	1	68	4	100%
2016	1	69	4	100%
2016	1	70	4	100%
2016	1	71	4	100%
2016	1	72	4	100%
2016	1	73	4	100%
2016	1	74	4	100%
2016	1	75	4	100%
2016	1	76	4	100%
2016	1	77	4	100%
2016	1	78	4	100%
2016	1	79	4	100%
2016	1	80	4	100%
2016	1	81	4	100%
2016	1	82	4	100%
2016	1	83	4	100%
2016	1	84	4	100%
2016	1	85	4	100%
2016	1	86	4	100%
2016	1	87	4	100%
2016	1	88	4	100%
2016	1	89	4	100%
2016	1	90	4	100%
2016	1	91	4	100%
2016	1	92	4	100%
2016	1	93	4	100%
2016	1	94	4	100%
2016	1	95	4	100%
2016	1	96	4	100%
2016	1	97	4	100%
2016	1	98	4	100%
2016	1	99	4	100%
2016	1	100	4	100%

Quick Reference

This document provides a quick reference for the **Assessment Feedback Report (AS.007.01-A)**. This report provides a student list, aggregate results by claims/indicator, and aggregate results by performance levels. Instead of looking at currently enrolled students and their historical results, this report looks at the results of past students who were enrolled at the end of the selected year.

The report is found under **ASSESSMENT REPORTS** in the **REPORTS** tab within SD-STARS.

Questions Report will Help Answer

- How did my students from last year do on the state assessment?
- Of the students I had in the past, what claims/indicators have they consistently understood? What claims/indicators have students struggled with?
- Of the students I had in the past, what is the breakdown by performance level?

Intended Audience


Teachers; Principals; Administrative Staff (school and district); Superintendents

Data Details

The data in this report comes from the state assessment files. The report contains three tabs that can be navigated at the top. The first is a student list. The second looks at the percentage of students who are proficient on claims/indicators. The third provides aggregated performance rates over the years.

Common Misunderstandings

Most reports in SD-STARS look at currently enrolled students and their historical results, such as AS.003.02 – Assessment Detail Results or AS.006.01 – Student Achievement Roster. Instead, **this report looks at students who were enrolled at the end of the selected year** with the selected district/school/classroom.




Last Updated: 11/14/2017
Page 1 of 10
doe.sd.gov

Now we will use the SD-STARS Training Environment to provide a demonstration of navigation through the SD-STARS portal. If you have any questions about the menus shown, please contact the SD-STARS team.

Demonstration: Data Interpretation Guides (DIGs)

Now we will use the SD-STARS Training Environment to provide a demonstration of navigation through the SD-STARS portal. If you have any questions about the menus shown, please contact the SD-STARS team.


 south dakota
STARs Student Teacher Accountability and Reporting System

[Home](#) [My STARs](#) [Content Library](#) [Accountability](#) [Reports](#) [Training Center](#) [Admin](#)


Home » STARs Reports

STARs Reports

Select a report by clicking on the report name below.

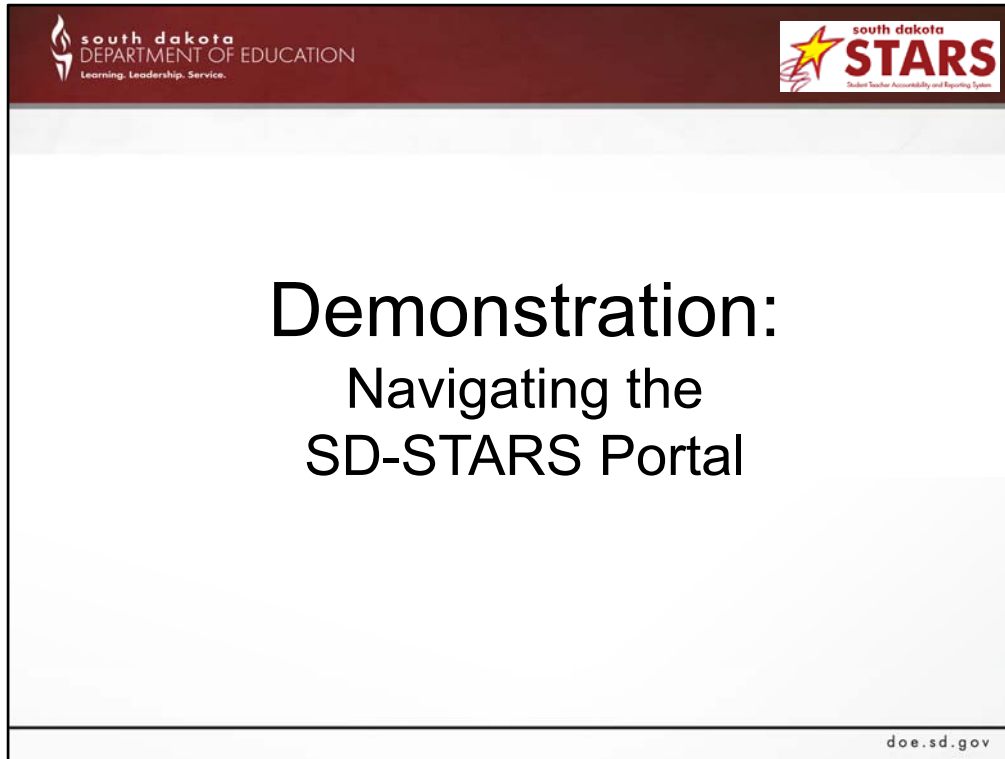
Select Reports. Each user will have access to different reports, based on job title & permission levels.

Enrollment Reports	Assessment Reports	Attendance Reports
EN.001.00-X - Enrollment Demographics	AS.001.01-A - Achievement Cut Score	AT.001.00-X - Attendance Demographics
EN.002.00-A - Student Enrollment List	AS.002.01-A - ACT Stoplight	AT.002.00-A - Student Attendance List
EN.003.01-A - Student Profile	AS.003.02-A - Assessment Detail Results	AT.003.00-X - Chronic Absenteeism Demographics
EN.004.00-X - Withdrawal Reason Analysis	AS.005.01-A - Student Longitudinal Achievement	
EN.005.00-A - Student Withdrawal List	AS.006.01-A - Student Achievement Roster	
EN.006.00-A - Mobility Report	AS.007.01-A - Assessment Feedback Report	
EN.007.00-A - Fall Enrollment Census Count - Student	AS.008.00-A - ACCESS Test Takers	
EN.007.00-X - Fall Enrollment Census Count - Aggregate		
EN.008.02-A - McKinney-Vento Student Count		
EN.009.00-X - Special Education Trend		
CTE Reports	Special Education Report	Early Warning Reports
CT.001.00-X - CTE Biennial Review - Career Cluster	SP.003.00-A - Special Education Exiter	EW.001.00-A - Early Warning
CT.002.00-X - CTE Biennial Review - Enrollment	SP.008.00-X - Child Outcomes Summary Form	
CT.003.00-X - Dual Credit - Course Enrollment	SP.012.00-A - Children with No Assignments	
CT.004.00-X - Dual Credit - Student Participation	SP.013.00-A - Part B Indicator 7 Child List	
CT.005.00-X - Dual Credit - Average Credits		
CT.006.00-X - Dual Credit - Pass Rate		
CT.007.00-X - CTE Biennial Review - Aggregate		
Student Outcomes Reports	Accountability Reports	Other Reports
SO.002.00-A - Proactive Admission and Remedial Coursework	AC.017.01-A - First Year in Country	OT.002.00-S - STARs Security - Org Role Updater
	AC.022.00-A - Student Level Report - Projected FAY	OT.003.01-S - Infinite Campus Connection
		OT.006.01-S - District Access Tracker

© Copyright 2019, South Dakota Department of Education powered by  Blender. All Rights Reserved.
 Need help or technical support? [Contact Support](#).


Reports are found in the Reports menu in SD-STARs.

1. Select Reports. Each user will have access to different reports so this screen may look a little different for you.
2. If you think you are missing any reports on this menu, please contact the SD-STARs team. You may not have the right permissions set up in your account.



Now we will use the SD-STARS Training Environment to provide a demonstration of navigation through the SD-STARS portal. If you have any questions about the menus shown, please contact the SD-STARS team.

Objectives

- What is SD-STARS?
- How do I log in to SD-STARS?
- How do I find & request reports?
- What other resources are available in SD-STARS? 
- How do I find help if I have questions?

For this session, we will discuss the following Objectives

- What is SD-STARS?
- How do I log in to SD-STARS?
- How do I find & request reports?
- What other resources are available in SD-STARS?
- How do I find help if I have questions?

south dakota
STARS Student Teacher Accountability
and Reporting System

Search SEARCH

Home My STARS Content Library Accountability Reports Training Center Admin

Home > Training Center

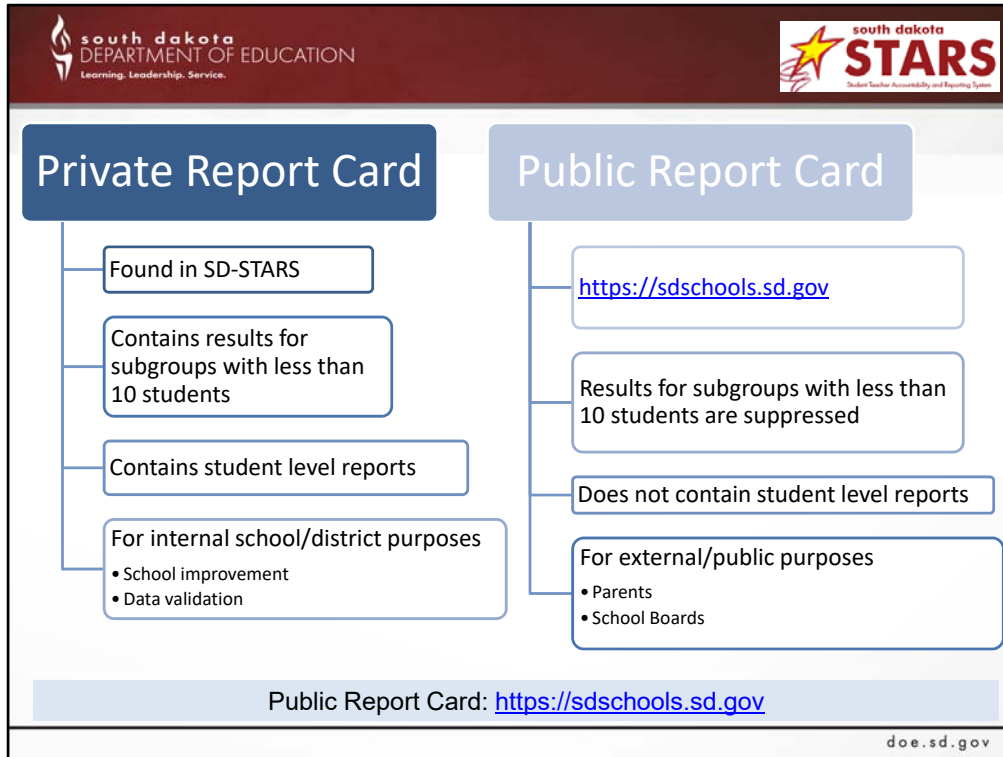
training center

Edit this page

The Training Center includes many useful resources!

Demonstration: Training Center

Every report has a Data Interpretation Guide, or DIG for short. These report DIGs start with a one-page summary of the report, followed by several pages of detailed information, resources and instructions. Report DIGs are the best resource to use if something in your report seems incorrect. Most of the time, there is either an explanation or adjustment that can be made to show the expected students/data.




For this session, we will discuss the following Objectives

- What is SD-STARS?
- How do I log in to SD-STARS?
- How do I find & request reports?
- What other resources are available in SD-STARS?
- How do I find help if I have questions?

Demonstration: Navigating to the Accountability Report Card

Now we will use the SD-STARS Training Environment to provide a demonstration of navigation through the SD-STARS portal. If you have any questions about the menus shown, please contact the SD-STARS team.


STARS Student Teacher Accountability and Reporting System
 SEARCH

[Home](#)
[My STARS](#)
[Content Library](#)
[Accountability](#)
[Reports](#)
[Training Center](#)
[Admin](#)

STATE OF SOUTH DAKOTA
2018-2019 Report Card

2018-19 Report Card
 2017-18 Report Card

ACADEMIC YEAR: 2018-2019
 DISTRICT: All Districts

School	Student Performance	Student Progress	College and Career Readiness	High School Completion	English Language Learners Progress	School Environment	Overall Score
Badlands District 99-9	●	●	●	●	●	●	
Dwight D. Eisenhower Elem-23	●	●	●	●	●	●	7
Frederick Douglass HS-01	●	●	●	●	●	●	10
Gerald Ford Elem-24	●	●	●	●	●	●	6
Harry Truman Elem-22	●	●	●	●	●	●	9
Herbert Hoover Elem-21	●	●	●	●	●	●	9
Jimmy Carter Elem-25	●	●	●	●	●	●	5
Sally Ride MS-11	●	●	●	●	●	●	7
Wilma Rudolph MS-12	●	●	●	●	●	●	7
Corn Palace District 88-8	●	●	●	●	●	●	
Andrew Jackson Elem-23	●	●	●	●	●	●	9

Rating Key: ● N/A ● 0 - 25% ● 25 - 50% ● 50 - 75% ● 75 - 100% Points Possible

For users who have Accountability permissions, they will be able to see the Accountability menu, which displays the private version of the Accountability Report Card.

Regional SD-STARs Trainings – Fall 2019

Date	Time	Description	Location
Tuesday, Oct. 29	8:30 a.m. – 12 p.m. MT	SD-STARs training for SAMs	Rapid City
Register: https://southdakota.gosignmeup.com/public/Course/browse?courseid=12682			
Tuesday, Oct. 29	1 – 4 p.m. MT	SD-STARs training for district users	Rapid City
Register: https://southdakota.gosignmeup.com/public/Course/browse?courseid=12683			
Tuesday, Nov. 5	8:30 a.m. – 12 p.m. CT	SD-STARs training for SAMs	Aberdeen
Register: https://southdakota.gosignmeup.com/public/Course/browse?courseid=12685			
Tuesday, Nov. 5	1 – 4 p.m. CT	SD-STARs training for district users	Aberdeen
Register: https://southdakota.gosignmeup.com/public/Course/browse?courseid=12686			
Monday, Nov. 7	8:30 a.m. – 12 p.m. CT	SD-STARs training for SAMs	Sioux Falls
Register: https://southdakota.gosignmeup.com/public/Course/browse?courseid=12677			
Monday, Nov. 7	1 – 4 p.m. CT	SD-STARs training for district users	Sioux Falls
Register: https://southdakota.gosignmeup.com/public/Course/browse?courseid=12678			

An excellent opportunity exists this fall to meet up with other educators and learn about using data found in SD-STARs! Our trainings are split into half-day sessions, depending on the district’s staff and their needs:

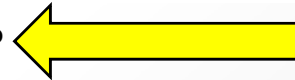
Morning session: This session will show STARs Account Managers how to set up and manage accounts in SD-STARs.

Afternoon session: This session is for ANYONE who wants to gain more practice digging into the reports and other resources that are available within the SD-STARs portal.

You may sign up for any of these sessions via GoSignMeUp. If you have questions, please email STARSHelp@state.sd.us.

Objectives

- What is SD-STARS?
- How do I log in to SD-STARS?
- How do I find & request reports?
- What other resources are available in SD-STARS?
- How do I find help if I have questions?



For this session, we will discuss the following Objectives

- What is SD-STARS?
- How do I log in to SD-STARS?
- How do I find & request reports?
- What other resources are available in SD-STARS?
- How do I find help if I have questions?



south dakota
DEPARTMENT OF EDUCATION
Learning. Leadership. Service.



south dakota
STARS
Student Teacher Accountability and Reporting System

Upcoming SD-STARS Trainings

A full list of upcoming trainings is found at <https://doe.sd.gov/sdstars>

SD-STARS Listserv

<https://www.k12.sd.us/MailingList/DataSTARS>

Bi-monthly Newsletter

STARS Connections – Found in Training Center



south dakota
STARS
Student Teacher Accountability and Reporting System

August 2019

connections

Important News about the 2018-19 Report Card

Once again, the South Dakota Department of Education will use

- This year, there will be only ONE opportunity to appeal

Inside this issue

Accountability Timeline	Page 2
New data & updates	Page 3
SD-STARS Reports	Page 4
Update Summary	Page 5

doe.sd.gov

The SD-STARS team provides several ways to stay in contact and to learn about the program through the year. There is a listserv and periodic newsletters that are produced by SD-STARS Team. You can find them online or, if you are a part of our listserv, you will get it in your email.

Contact SD-STARS Team

Name	Email
Brad Steckelberg Support Lead	Brad.Steckelberg@state.sd.us 605-773-4463
Sara Kock SD-STARS Team Lead	Sara.Kock@state.sd.us 605-220-6548
Kim Carlson Project Manager	Kim.Carlson@state.sd.us 605-773-8062
SD-STARS Help Desk	STARSHelp@state.sd.us
SD-STARS Website	https://doe.sd.gov/SDSTARS/

Thank you for attending today's webinar!