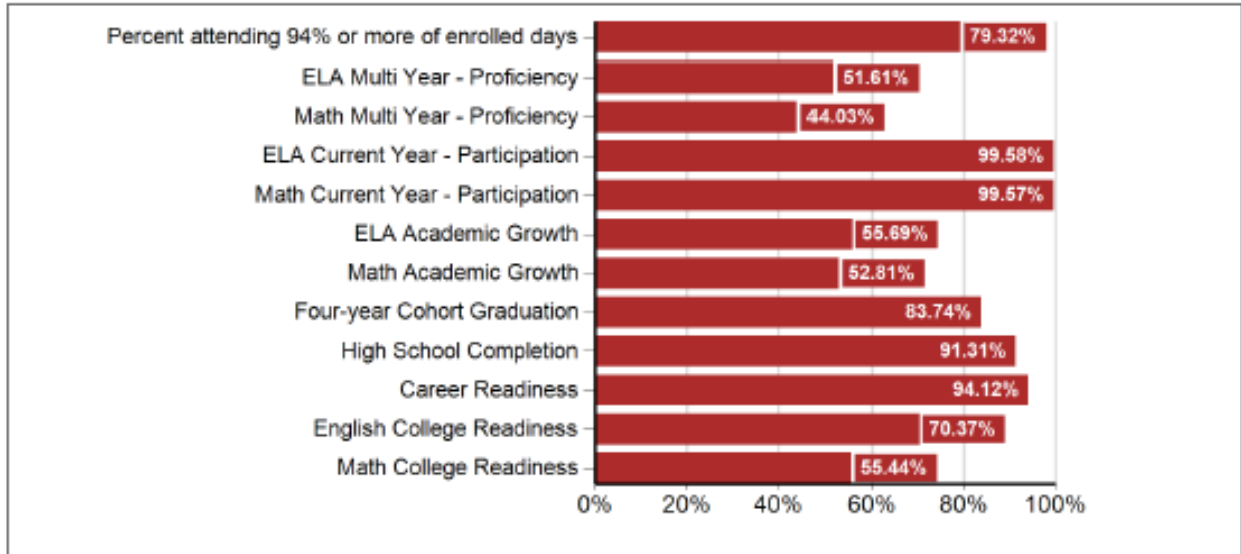


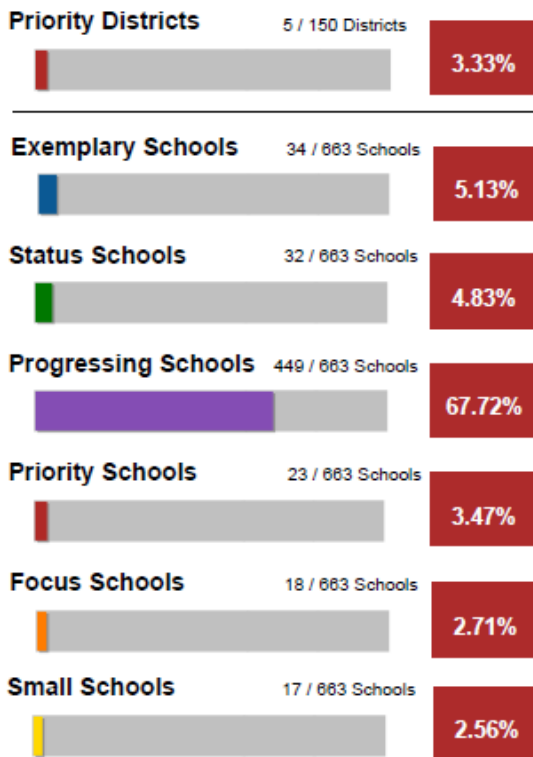
2016-17 Report Card State-Level Results

September 18, 2017

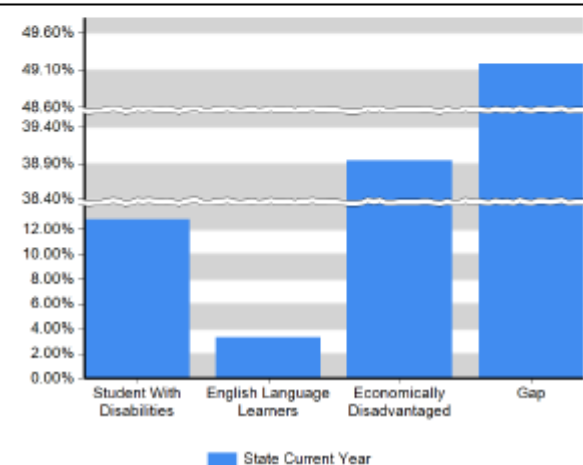
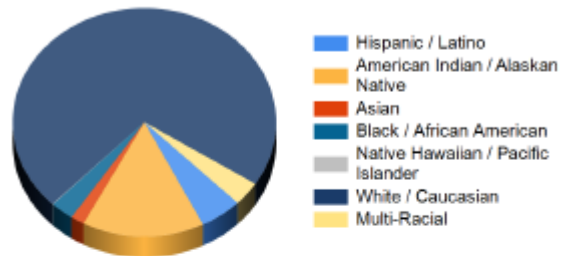
Performance Indicators



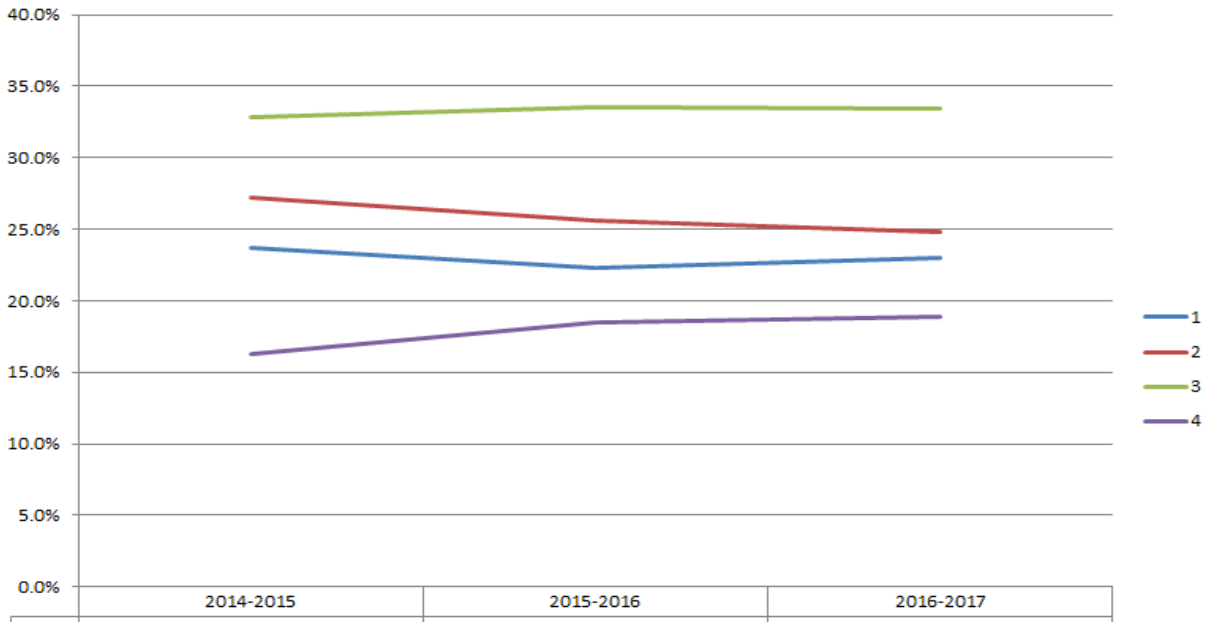
School Performance Index



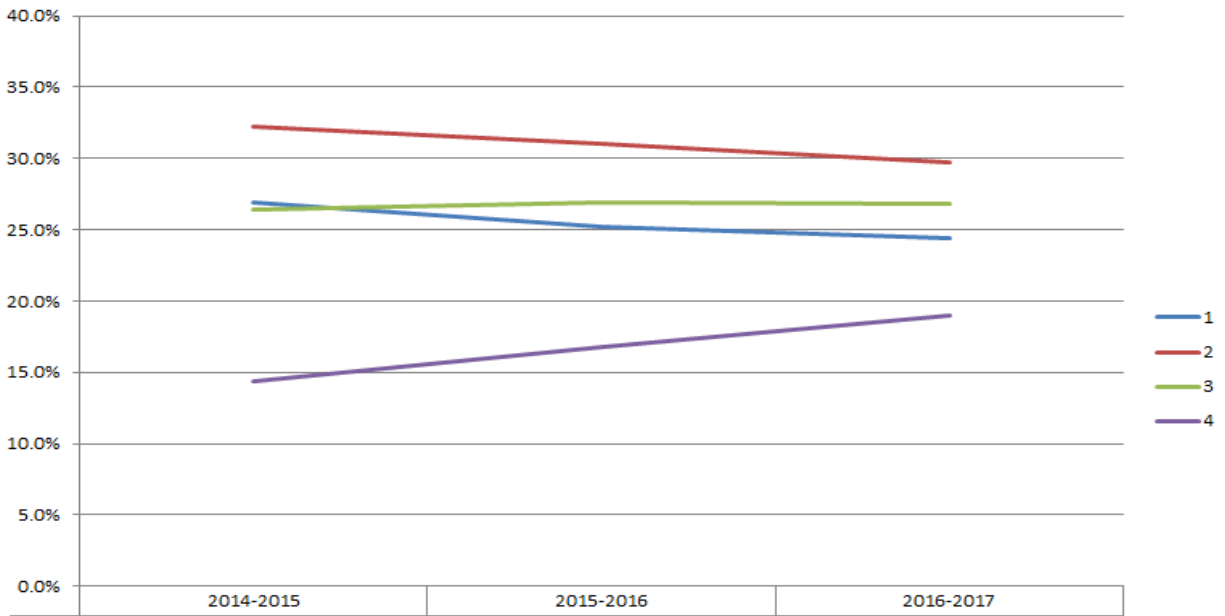
Race/Ethnicity Percent of Student Population



ELA Results over Three Years



Math Results over Three Years



Student Achievement:

Subject	Percent Proficient		
	2016-17	2015-16	2014-15
Math	46.34	44.31	41.29
English Language Arts	52.70	52.55	49.48

Academic Growth:

Subject	Percent Meeting Standard	
	2016-17	2015-16
Math	52.81	51.02
English Language Arts	55.69	56.93

Attendance:

Percent attending 94% or more of their enrolled days

2016-17	2015-16	2014-15
79.32	80.23	79.66

High School Completion:

Measure	2016-17	2015-16	2014-15
4-Year Cohort Grad. Rate	83.74	83.88	83.86
Completion Rate	91.31	90.23	90.05

College and Career Readiness:

* Year-to-Year comparisons are not an indicator of trends. South Dakota has and will continue to add data to the measure to reflect more robustly how well schools are preparing students for what comes next. This will continue under ESSA.

2015-16 college readiness rates include only ACT and Accuplacer scores – limiting the pool of students considered. 2016-17 college readiness rates include Smarter Balanced, ACT, and Accuplacer scores, therefore giving a more robust view of how well graduates are prepared for college.

Subject	2016-17	2015-16	2014-15
Math	55.44	65.51	67.27
English	70.37	72.38	75.75
Career	94.12	92.33	N/A